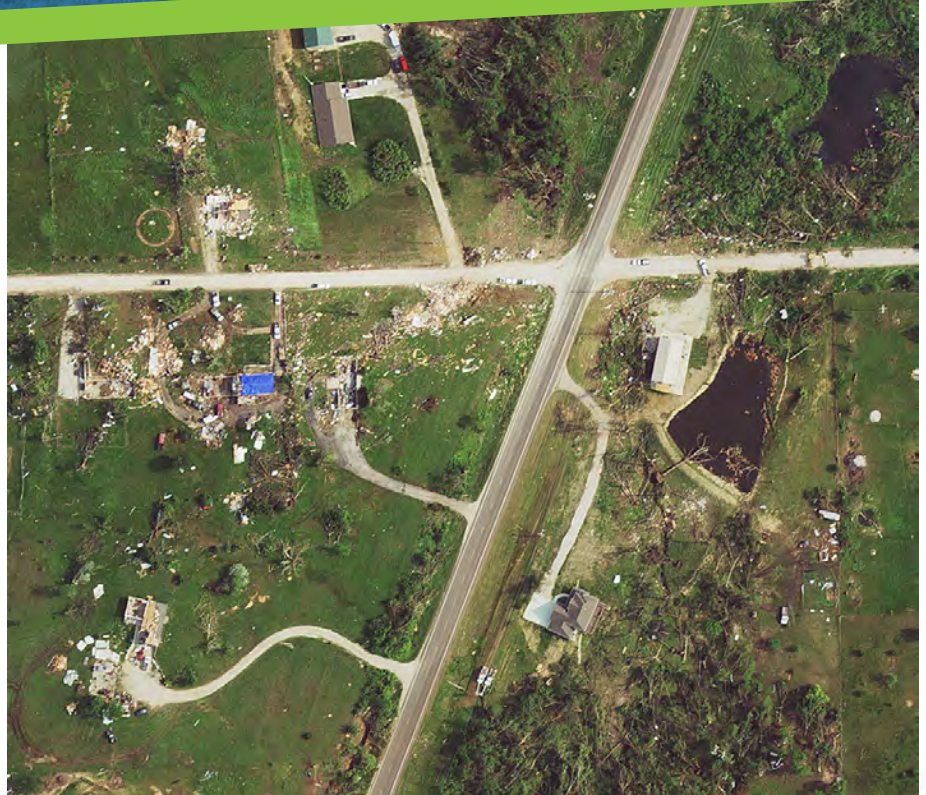


Emergency Tornado Imagery

Surdex Captures Kansas Tornado Damage

Emergency tornado imagery online within 24 hours. Final delivery within 3 days.

In late May of 2019, Douglas and Leavenworth counties in Northeastern Kansas were hit by a tornado. The Kansas Department of Administration and Kansas 911 Coordinating Council immediately contacted Surdex seeking aerial imagery services. Within a few days of the tornado, we acquired 113 square miles of 1' ground sample distance imagery. By applying our rapid response disaster mapping procedures, Surdex provided preliminary imagery online within 24 hours of acquisition, and within three days of flight, we completed the final dataset.



1' Ground Sample Distance imagery of tornado damage in Kansas

Post-tornado imagery is important for damage assessment, and expedited delivery of the imagery is essential to maximize the utility of the data for emergency response, planning, and recovery efforts. Because we own several aircraft and large-format imagery sensors, we can quickly acquire post-disaster data shortly after the event. From there we implement our rapid response disaster mapping procedures and deliver preliminary data so response units can begin using it as soon as possible.



SURDEX
CORPORATION

surdex.com

636-368-4400 • info@surdex.com