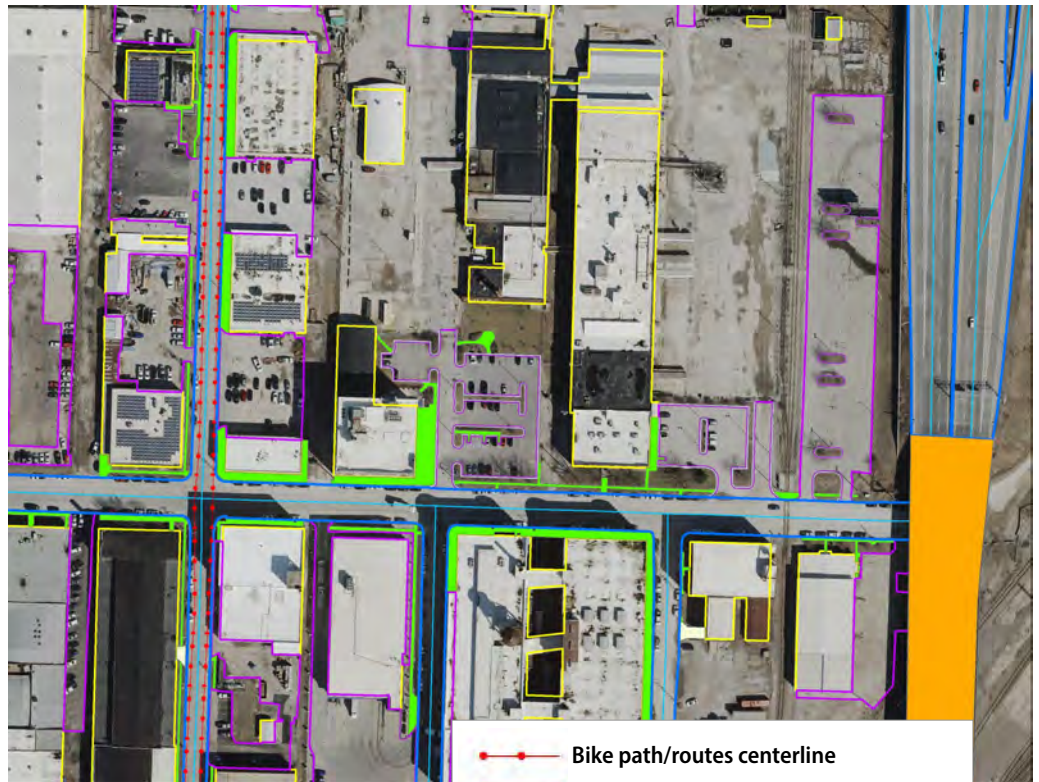


Robust High Resolution Orthoimagery Project over North Kansas City

In 2019, Surdex completed a mapping project for the city of North Kansas City as a subcontractor to Midland GIS. Surdex and Midland GIS have an extensive history of partnering on aerial mapping projects, and this project was yet another success for the team. The project involved 3D planimetric mapping updates and topographic mapping as well as collection of the source imagery over a 4.5-square-mile project area.

Surdex created a survey plan and Midland Surveying performed the ground survey. We acquired 3" GSD imagery over the project area and produced orthoimagery and performed an comprehensive update of 1"=50' planimetric data including roads, buildings, rivers, bike paths, and several other features through 3D stereo collection. We also generated 1' contours from a photogrammetrically compiled DTM and provided spot elevation data. This rich dataset will help North Kansas City with GIS-based work, including tasks performed by their Public Works and Community Development departments.



	Bike path/routes centerline		Parking lots
	Roads		Rivers
	Road centerline		Sidewalks
	Bridges		Buildings
	Curb/gutter		
	Driveways		



Your Strategic Geospatial Resource

surdex.com • 636-368-4400 • info@surdex.com